

# ASSEMBLY MANUAL

## Ground anchors set

### K1-0026



File: 2017-07-27

**TECHNICAL SUPPORT**

Paweł Ciechanowski



[p.ciechanowski@polanik.com](mailto:p.ciechanowski@polanik.com)

## Thank you for purchasing POLANIK cage type KLM-7/10-A.

### Safe assembly and use

- Before you start to assemble and use the cage please read this manual carefully, watch the enclosed instruction film and store the manual in a safe place for further reference. Polanik Sp. z o. o. shall not be liable for any cage damages which are the result of the failure to follow this manual.
- Unauthorized copying of this manual, in whole or in part, is prohibited.
- The contents of this manual are subject to change without notice.
- Warning! The sports equipment produced by Polanik Sp. z o. o. is designed for athletics training and use in sports competitions only. Please pay special attention especially when using throwing implements and other throwing equipment, misuse of athletics equipment and implements can cause serious injury or in extreme cases even death. That is why training and use during sports events have to be always supervised by authorized sports personnel. In no event shall Polanik Sp. z o. o. be liable for any special, incidental, indirect or consequential damages in connection with the purchase or use of POLANIK products or costs over the original cost of the product.
- Specific warranty terms:
  - 1) The use of the throwing cage (KLM-7/10-A) is to be done in the properly marked and secured sports facility designed for that purpose and under supervision of qualified coaches, and according to: the rules of the International Association of Athletics Federations (IAAF), respective national athletics federation and local safety regulations. Failure to follow the above restrictions results in loss of the warranty rights.
  - 2) The throwing cage (KLM-7/10-A) is designed to protect the spectators against the improperly released hammer (discus) which misses the cage mouth. The execution of that task brings a risk of damages to the cage elements (for example the pillars), as a crumple zone of an automobile is damaged to absorb energy from the impact during an accident to save passengers. The damages caused by the proper cage operation, which is stopping improperly thrown hammers (discuses) from flying outside the cage and absorbing the impact energy in order to protect the thrower inside the throwing circle, are recognized as a normal wear of the product and are excluded from the warranty. The damages can be removed in course of payable repair or replacement of the cage elements.

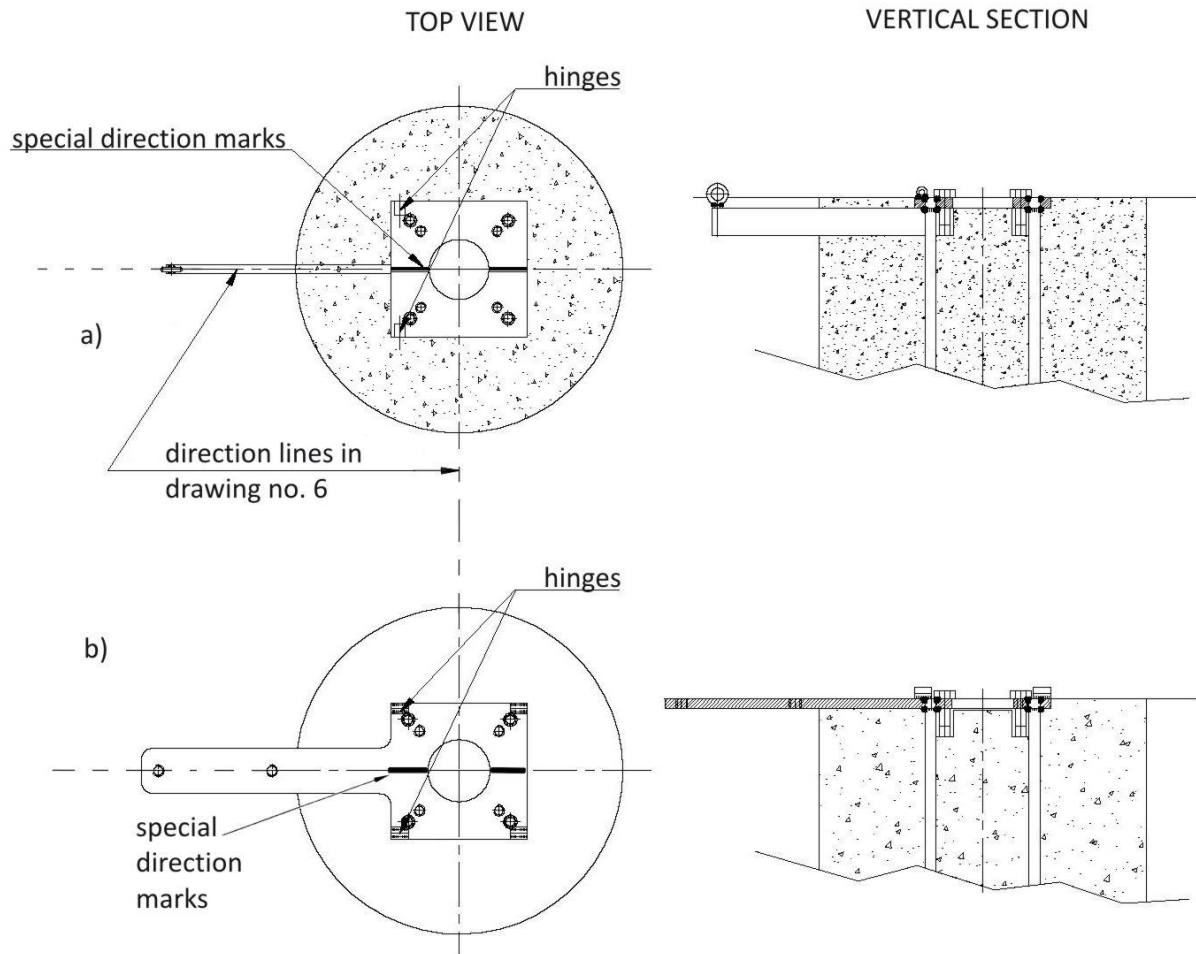
## I. Parts list

Part description	Quantity	Material	Photo
Anchor	8	Electro-galvanized steel	
Extreme pillar anchor (with flat bar)	2	Electro-galvanized steel	
Screw M 20x50	44	Electro-galvanized steel	
Washer 20	44	Electro-galvanized steel	

## II. Anchors – placing in concrete

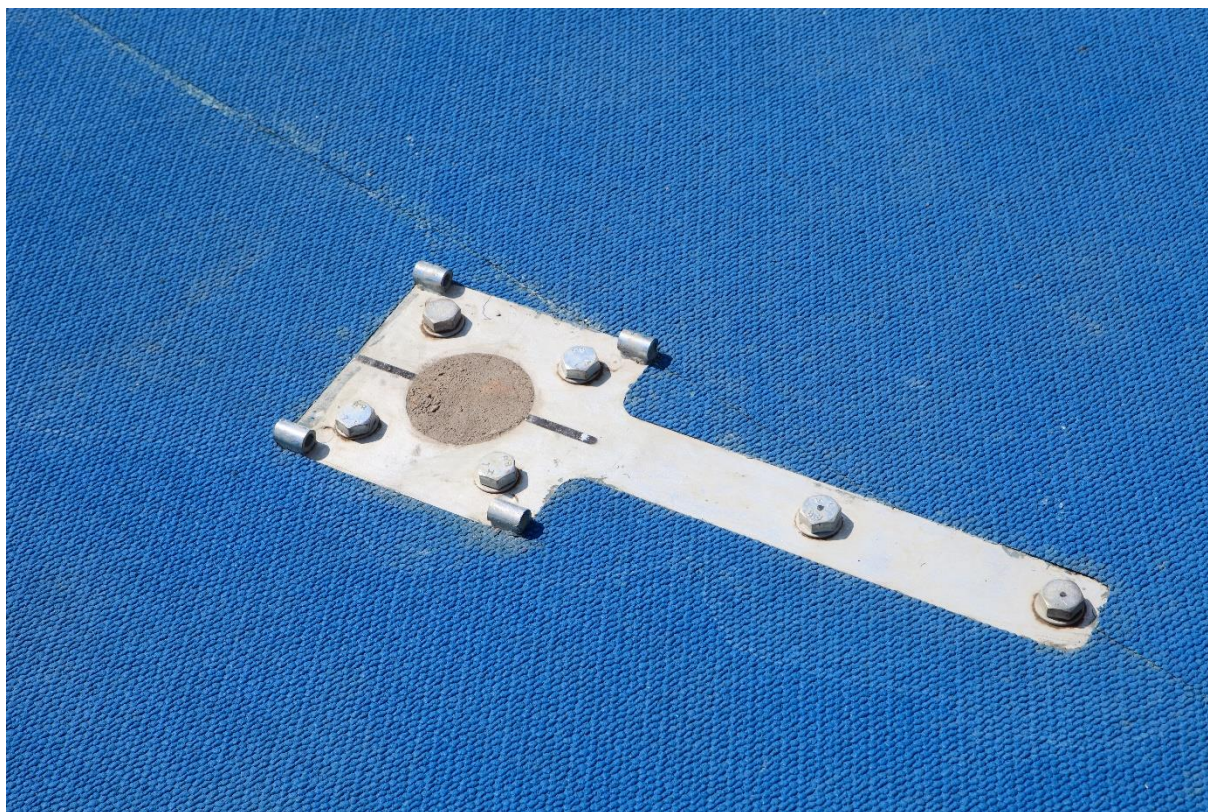
The anchors for rear pillars should be positioned in concrete so that **their hinges face the throwing circle**. The anchors for extreme pillars ought to be positioned in concrete so that **their flat bars face the inside of the cage**. **Attention!** All anchors must be embedded in the foundation blocks in such a way that their upper surfaces are exactly horizontal, then pillars will be precisely in vertical position. **Each anchor must be fixed according to the direction marks**. During the embedding process please make sure that the screws situated in the upper plates of the anchors are fully screwed down and their threads are well protected by rubber sleeves. If concrete plasters the threads of the screws it will be impossible to install the pillars. Foundation blocks are shown in drawing no. 4a and 4b.

There are special direction marks painted on each anchor (drawing a and b). Drawing b is showing the anchors for extreme pillars. Drawing a is presenting the anchors of rear pillars. All direction marks on the anchors must correspond with the direction lines in drawing no. 6. The positions of the anchor hinges should be also checked and compared with drawing no. 6. All supplied anchors are ready for embedding (screws are fully screwed down and their threads coated with rubber sleeves).

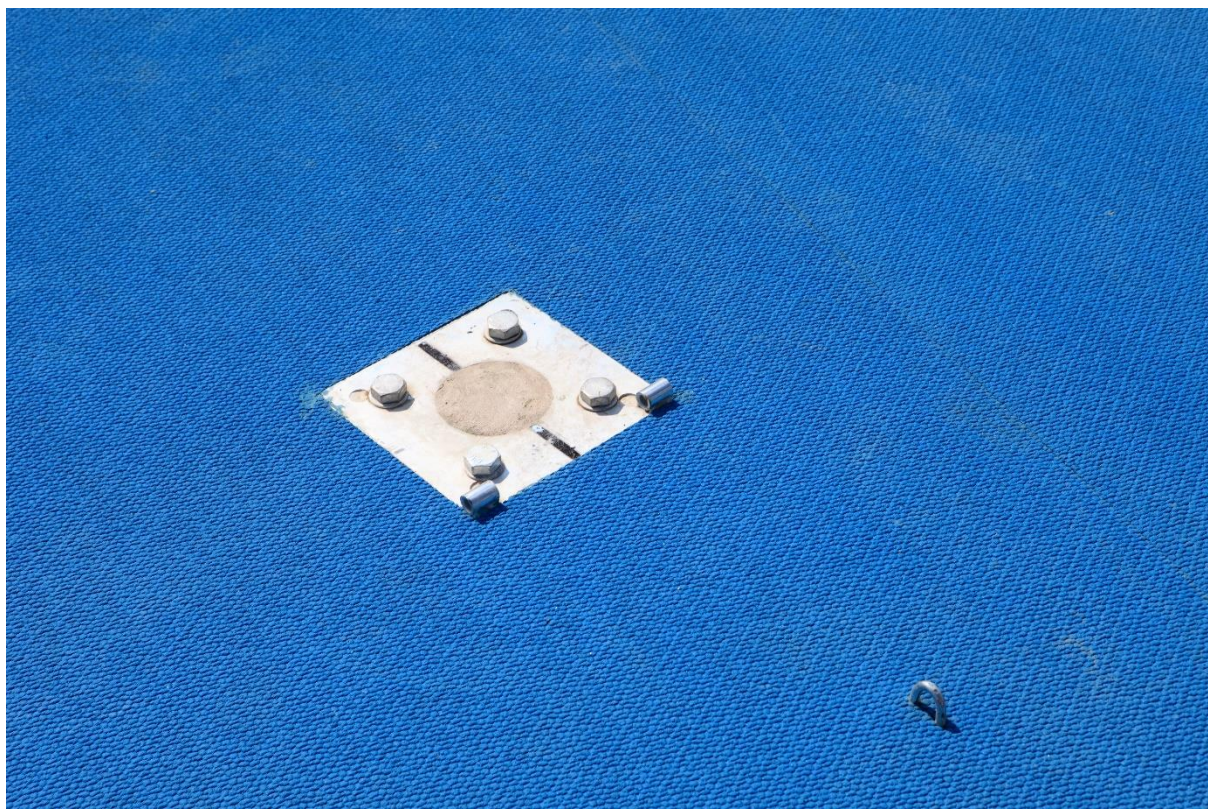


The anchors should be placed in the concrete of the class B20 quality or higher. Each time the anchor is put into the foundation the concrete should be mixed, so that it covers tightly the ribbed bars and there are no air chambers inside. During the concrete setting the foundations should be moistened (in the first week twice a day, in the second week once a day). You ought to wait minimum 2 weeks before you proceed with the installation of the pillars.





**Extreme pillar anchor in concrete**



**Anchor in concrete**



